



**Albany Police Department**

Attitude • Pride • Duty



## **“Combating Crime and Protecting Lives”**

*Prepared By the Crime Analysis Unit of The Albany Police Department*

# 2016

**Month of January**

» These numbers may be updated from month to month as records updates occur «

Distribution:

City Manager  
Assistant City Managers  
Chief Of Police  
Deputy Chief – Criminal  
Investigations  
Deputy Chief – Uniform  
Deputy Chief – Support Services  
Major - Internal Affairs

Investigations Captains  
Uniform Captains  
Special Operations Captain  
Accreditation Manager  
Family Protection  
Records Supervisor  
Planning & Research  
Training Supervisor

**\*Information Included in this Report Reflects  
Compliance with UCR Reporting Standards**

***The information contained in this report is primarily raw data until calendar year reporting.***

Please contact David Sparks, APD Crime Analyst for questions regarding this report @ 431-2878.

# Monthly Part I Crimes

## Albany Police Department

### Part I Crimes Committed During the Month of January 2016 with Comparisons of January 2015 & 2014

Actual Offenses	2016 2015 Month to Month		+/- Change		2016 2014 Month to Month		+/- Change	
Offenses Committed	January 2016	January 2015	#	%	January 2016	January 2014	#	%
Murder	0	1	-1	-100.00	0	1	-1	-100.00
Rape	2	2	0	0.00	2	1	1	100.00
Robbery	16	10	6	60.00	16	16	0	0.00
Aggravated Assault	41	42	-1	-2.38	41	49	-8	-16.33
<b>Violent Crime Total</b>	<b>59</b>	<b>55</b>	<b>4</b>	<b>7.27</b>	<b>59</b>	<b>67</b>	<b>-8</b>	<b>-11.94</b>
Burglary	76	101	-25	-24.75	76	114	-38	-33.33
Larceny	233	211	22	10.43	233	229	4	1.75
Auto Theft	16	20	-4	-20.00	16	20	-4	-20.00
Arson	1	2	-1	-50.00	1	0	1	*NC
<b>Property Crime Total</b>	<b>326</b>	<b>334</b>	<b>-8</b>	<b>-2.40</b>	<b>326</b>	<b>363</b>	<b>-37</b>	<b>-10.19</b>
<b>Crime Trend Total</b>	<b>385</b>	<b>389</b>	<b>-4</b>	<b>-1.03</b>	<b>385</b>	<b>430</b>	<b>-45</b>	<b>-10.47</b>

### Part I Case Clearances During the Month of January 2016 with Comparisons of January 2015 & 2014

	2016	2015	2014	2016	2015	2014
Offenses Cleared	January # Cleared	January # Cleared	January # Cleared	January % Cleared	January % Cleared	January % Cleared
Murder	1	1	2	*NC	100.00%	200.00%
Rape	2	2	1	100.00%	100.00%	100.00%
Robbery	7	1	2	43.75%	10.00%	12.50%
Aggravated Assault	18	23	20	43.90%	54.76%	40.82%
<b>Violent Crime Cleared</b>	<b>28</b>	<b>27</b>	<b>25</b>	<b>47.46%</b>	<b>49.09%</b>	<b>37.31%</b>
Burglary	20	13	12	26.32%	12.87%	10.53%
Larceny	46	50	46	19.74%	23.70%	20.09%
Auto Theft	4	5	6	25.00%	25.00%	30.00%
Arson	0	2	0	0.00%	100.00%	*NC
<b>Property Crime Cleared</b>	<b>70</b>	<b>70</b>	<b>64</b>	<b>21.47%</b>	<b>20.96%</b>	<b>17.63%</b>
<b>Clearance Total</b>	<b>98</b>	<b>97</b>	<b>89</b>	<b>25.45%</b>	<b>24.94%</b>	<b>20.70%</b>

\* The Crime Trend and Clearance Totals do not include percentages for numbers not divisible by 0.

# Year to Date Part I Crimes

## Albany Police Department

Part I Crimes Committed Year-to-date as of January 2016 with Comparisons of January 2015 & 2014								
Actual Offenses	2016 Year to Date		2015 Year to Date		+/- Change			
	January 2016	January 2015	#		%			
Offenses Committed								
Murder	0	1	-1		-100.00			
Rape	2	2	0		0.00			
Robbery	16	10	6		60.00			
Aggravated Assault	41	42	-1		-2.38			
<b>Violent Crime Total</b>	<b>59</b>	<b>55</b>	<b>4</b>		<b>7.27</b>			
Burglary	76	101	-25		-24.75			
Larceny	233	211	22		10.43			
Auto Theft	16	20	-4		-20.00			
Arson	1	2	-1		-50.00			
<b>Property Crime Total</b>	<b>326</b>	<b>334</b>	<b>-8</b>		<b>-2.40</b>			
<b>Crime Trend Total</b>	<b>385</b>	<b>389</b>	<b>-4</b>		<b>-1.03</b>			

Part I Case Clearances Year-to-date as of January 2016 with Comparisons of January 2015 & 2014								
	2016	2015	2014					
Offenses Cleared	January # Cleared	January # Cleared	January # Cleared	2016	2015	2014		
				January % Cleared	January % Cleared	January % Cleared		
Murder	1	1	2	*NC	100.00%	200.00%		
Rape	2	2	1	100.00%	100.00%	100.00%		
Robbery	7	1	2	43.75%	10.00%	12.50%		
Aggravated Assault	18	23	20	43.90%	54.76%	40.82%		
<b>Violent Crime Cleared</b>	<b>28</b>	<b>27</b>	<b>25</b>	<b>47.46%</b>	<b>49.09%</b>	<b>37.31%</b>		
Burglary	20	13	12	26.32%	12.87%	10.53%		
Larceny	46	50	46	19.74%	23.70%	20.09%		
Auto Theft	4	5	6	25.00%	25.00%	30.00%		
Arson	0	2	0	0.00%	100.00%	*NC		
<b>Property Crime Cleared</b>	<b>70</b>	<b>70</b>	<b>64</b>	<b>21.47%</b>	<b>20.96%</b>	<b>17.63%</b>		
<b>Clearance Total</b>	<b>98</b>	<b>97</b>	<b>89</b>	<b>25.45%</b>	<b>24.94%</b>	<b>20.70%</b>		

\* The Crime Trend and Clearance Totals do not include percentages for numbers not divisible by 0.

# Monthly Part II and Other Crimes

## Albany Police Department

Part II Crime Comparison of January 2016 Data with Previous Year/Month									
Part II Crimes	January 2016	January 2015	+/- #	Change %		January 2016	December 2015	+/- #	Change %
Other Assaults	21	197	-176	-89.34		21	21	0	0.00
Forgery & Counterfeiting	16	11	5	45.45		16	9	7	77.78
Fraud	16	0	16	*NC		16	0	16	*NC
Embezzlement	0	0	0	*NC		0	0	0	*NC
Stolen Property: Buying, Receiving	10	1	9	900.00		10	0	10	*NC
Vandalism	125	16	109	681.25		125	15	110	733.33
Weapons: Carrying, Possessing	1	0	1	*NC		1	0	1	*NC
Prostitution	0	0	0	*NC		0	0	0	*NC
Sex Offenses	5	5	0	0.00		5	5	0	0.00
Drug Abuse Violations	45	0	45	*NC		45	0	45	*NC
Gambling	0	0	0	*NC		0	0	0	*NC
Offenses Against Family & Children	96	78	18	23.08		96	76	20	26.32
Driving Under the Influence	13	10	3	30.00		13	14	-1	-7.14
Liquor Laws	9	11	-2	-18.18		9	8	1	12.50
Drunkenness	0	0	0	*NC		0	1	-1	-100.00
Disorderly Conduct	91	91	0	0.00		91	84	7	8.33
Vagrancy	1	1	0	0.00		1	0	1	*NC
All Other Offenses	25	114	-89	-78.07		25	264	-239	-90.53
Suspicion	0	0	0	*NC		0	0	0	*NC
Curfew and Loitering (under 18)	1	0	1	*NC		1	0	1	*NC
Runaways (under 18)	2	0	2	*NC		2	3	-1	-33.33
Total Part II Crime	477	535	-58	-10.84		477	500	-23	-4.60

Local Ordinance Violation Comparison of Jan 2016 Data with Previous Year/Month									
Part II Crimes	January 2016	January 2015	+/- #	Change %		January 2016	December 2015	+/- #	Change %
Curfew	0	0	0	*NC		0	0	0	*NC
Truancy	0	0	0	*NC		0	7	-7	-100.00
Saggy Pants	6	3	3	100.00		6	5	1	20.00
Noise	0	0	0	*NC		0	0	0	*NC
Animal Control	20	14	6	42.86		20	18	2	11.11
Parking	0	0	0	*NC		0	0	0	*NC
Parking Downtown	0	0	0	*NC		0	0	0	*NC
All Other	64	55	9	16.36		64	56	8	14.29
Missing Persons	13	22	-9	-40.91		13	14	-1	-7.14
Total Part II Crime	103	94	9	9.57		103	100	3	3.00

\*\* The Crime Trend and Clearance Totals do not include percentages for numbers not able to be divided by 0.

# Monthly Part II and Other Crimes

## Albany Police Department

Part II Crime 2016 Year to Date Vs. 2015 & 2014 Year to Date									
Part II Crimes	YTD 2016	YTD 2015	+/- #	Change %		YTD 2016	YTD 2014	+/- #	Change %
Other Assaults	21	197	-176	-89.34		21	115	-94	-81.74
Forgery & Counterfeiting	16	11	5	45.45		16	9	7	77.78
Fraud	16	0	16	*NC		16	0	16	*NC
Embezzlement	0	0	0	*NC		0	0	0	*NC
Stolen Property: Buying, Receiving	10	1	9	900.00		10	1	9	900.00
Vandalism	125	16	109	681.25		125	121	4	3.31
Weapons: Carrying, Possessing	1	0	1	*NC		1	0	1	*NC
Prostitution	0	0	0	*NC		0	0	0	*NC
Sex Offenses	5	5	0	0.00		5	10	-5	-50.00
Drug Abuse Violations	45	0	45	*NC		45	0	45	*NC
Gambling	0	0	0	*NC		0	0	0	*NC
Offenses Against Family & Children	96	78	18	23.08		96	98	-2	-2.04
Driving Under the Influence	13	10	3	30.00		13	12	1	8.33
Liquor Laws	9	11	-2	-18.18		9	8	1	12.50
Drunkenness	0	0	0	*NC		0	0	0	*NC
Disorderly Conduct	91	91	0	0.00		91	67	24	35.82
Vagrancy	1	1	0	0.00		1	3	-2	-66.67
All Other Offenses	25	114	-89	-78.07		25	64	-39	-60.94
Suspicion	0	0	0	*NC		0	0	0	*NC
Curfew and Loitering (under 18)	1	0	1	*NC		1	0	1	*NC
Runaways (under 18)	2	0	2	*NC		2	2	0	0.00
Total Part II Crime	477	535	-58	-10.84		477	510	-33	-6.47

Local Ordinance Violations 2016 Year to Date Vs. 2015 & 2014 Year to Date									
Part II Crimes	YTD 2016	YTD 2015	+/- #	Change %		YTD 2016	YTD 2014	+/- #	Change %
Curfew	0	0	0	*NC		0	0	0	*NC
Truancy	0	0	0	*NC		0	0	0	*NC
Saggy Pants	6	3	3	100.00		6	7	-1	-14.29
Noise	0	0	0	*NC		0	0	0	*NC
Animal Control	20	14	6	42.86		20	18	2	11.11
Parking	0	0	0	*NC		0	0	0	*NC
Parking Downtown	0	0	0	*NC		0	0	0	*NC
All Other	64	55	9	16.36		64	64	0	0.00
Missing Persons	13	22	-9	-40.91		13	9	4	44.44
Total Part II Crime	103	94	9	9.57		103	98	5	5.10

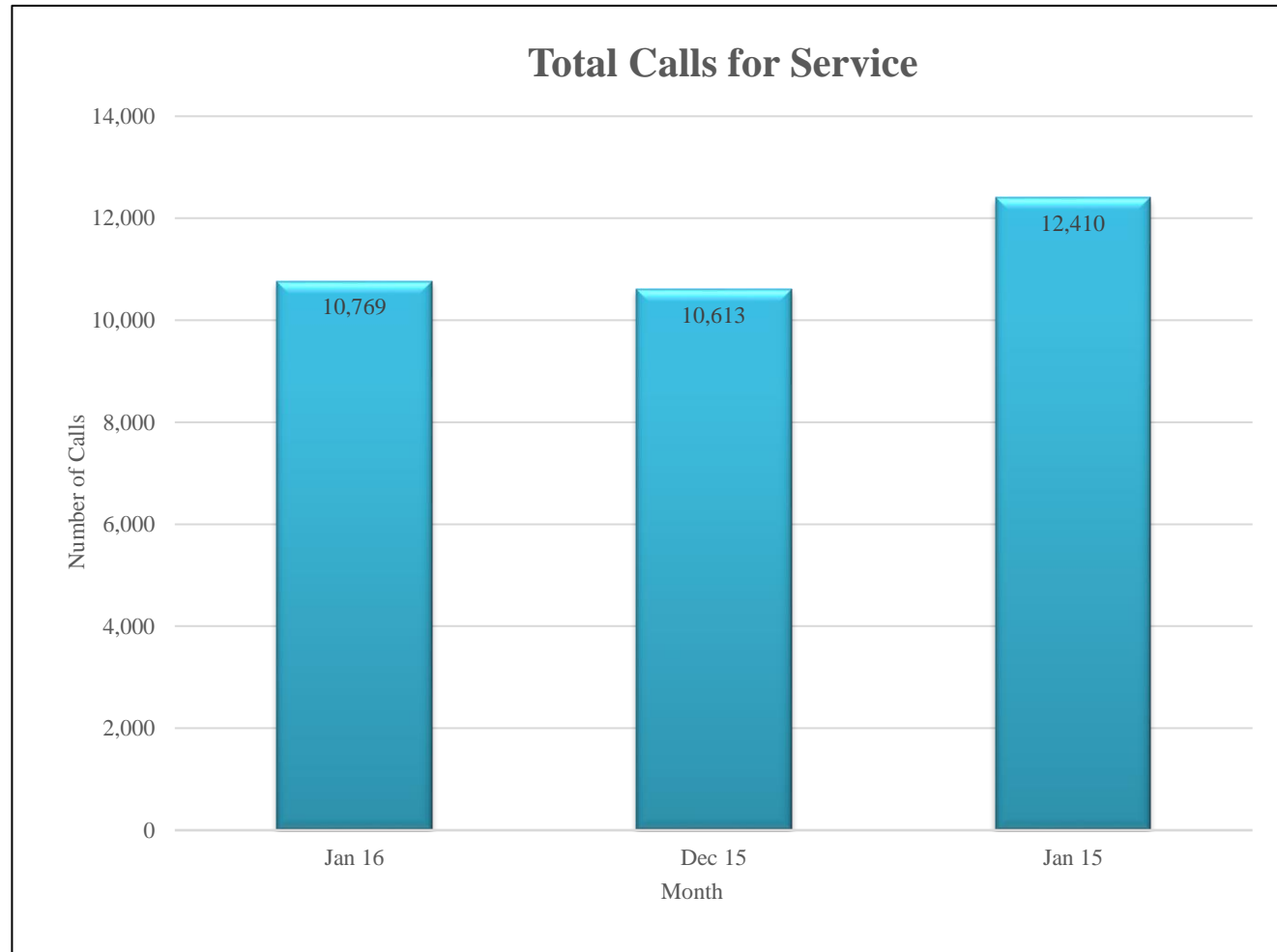
\*\* The Crime Trend and Clearance Totals do not include percentages for numbers not able to be divided by 0.

# Monthly Total Calls for Service

## Albany Police Department

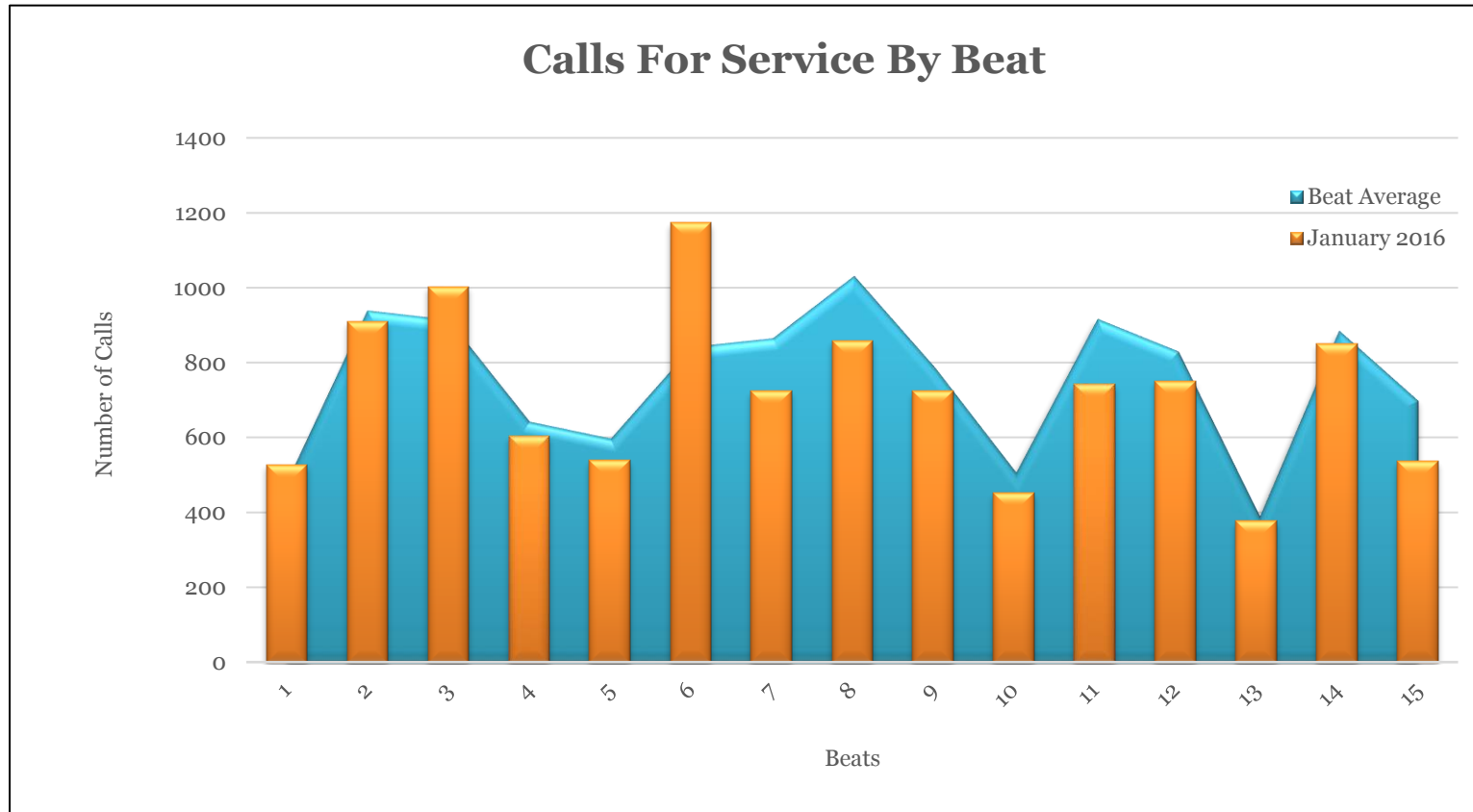
### Total Calls For Service

Jan 16	Dec 15	Jan 15
10,769	10,613	12,410



# Monthly Calls for Service by Beats

## Albany Police Department

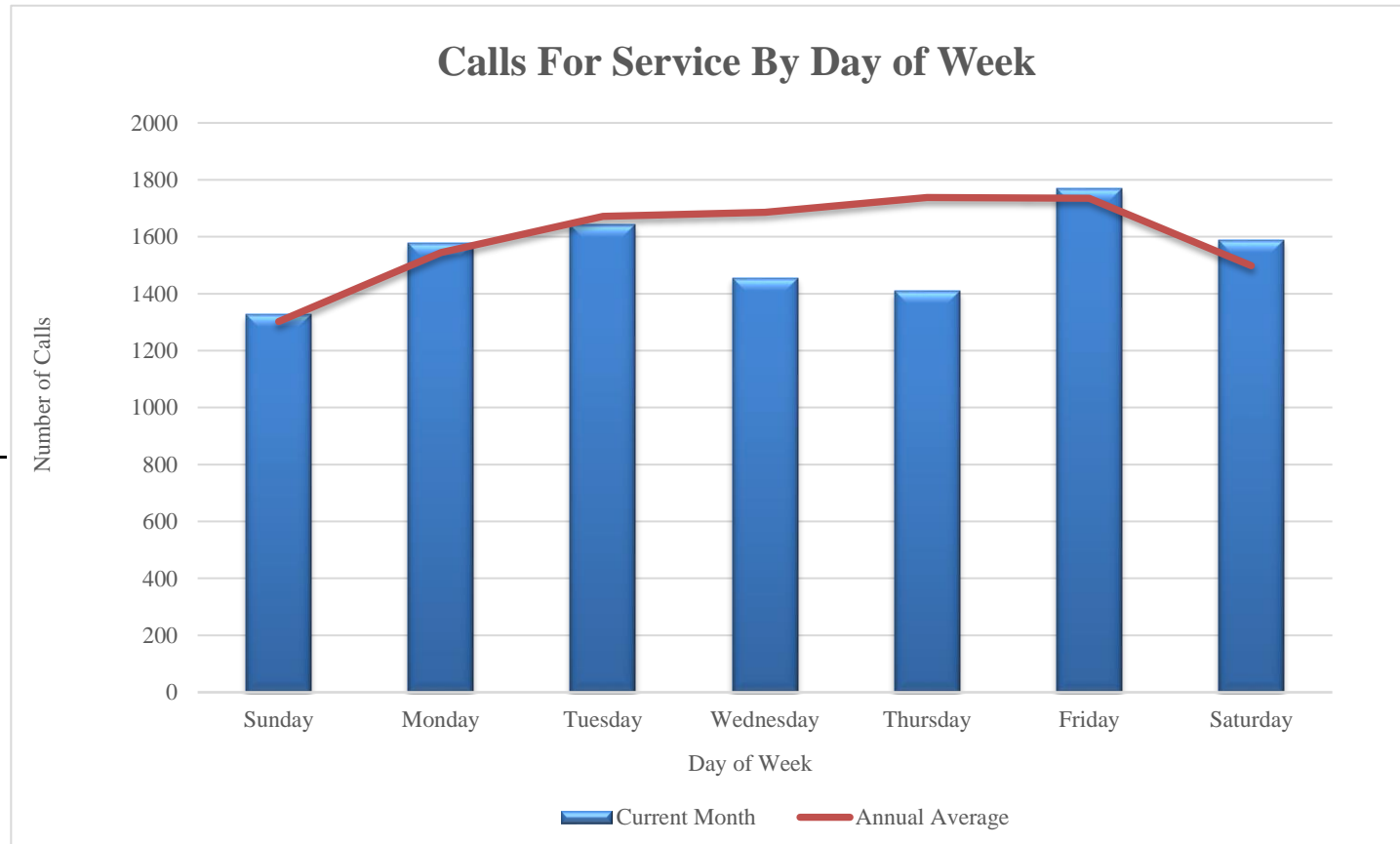


Beats	1	2	3	4	5	6	7	8	9	10	11	12	13	14	15
January 2016	527	908	1003	603	539	1174	723	859	724	451	742	751	377	851	537
Beat Average	478	938	914	642	597	841	864	1030	785	507	916	829	390	884	697

# Monthly Calls for Service by Day of Week

## Albany Police Department

<u>Calls For Service</u>	
Day	Jan 2016
Sunday	1327
Monday	1577
Tuesday	1643
Wednesday	1455
Thursday	1410
Friday	1768
Saturday	1589
	<hr/> 10769



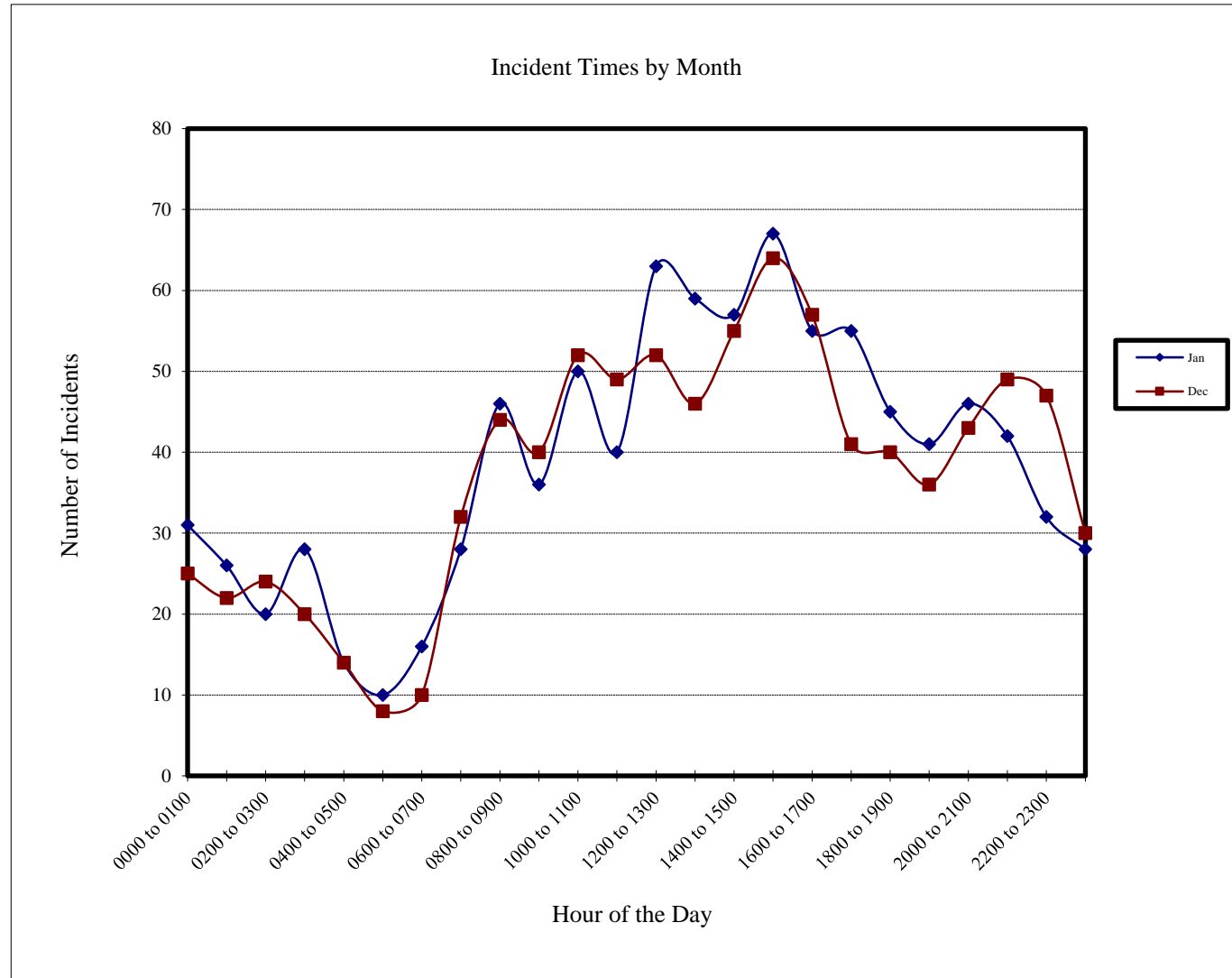


# Incidents by Hour

## Albany Police Department

### Incident Times by Month

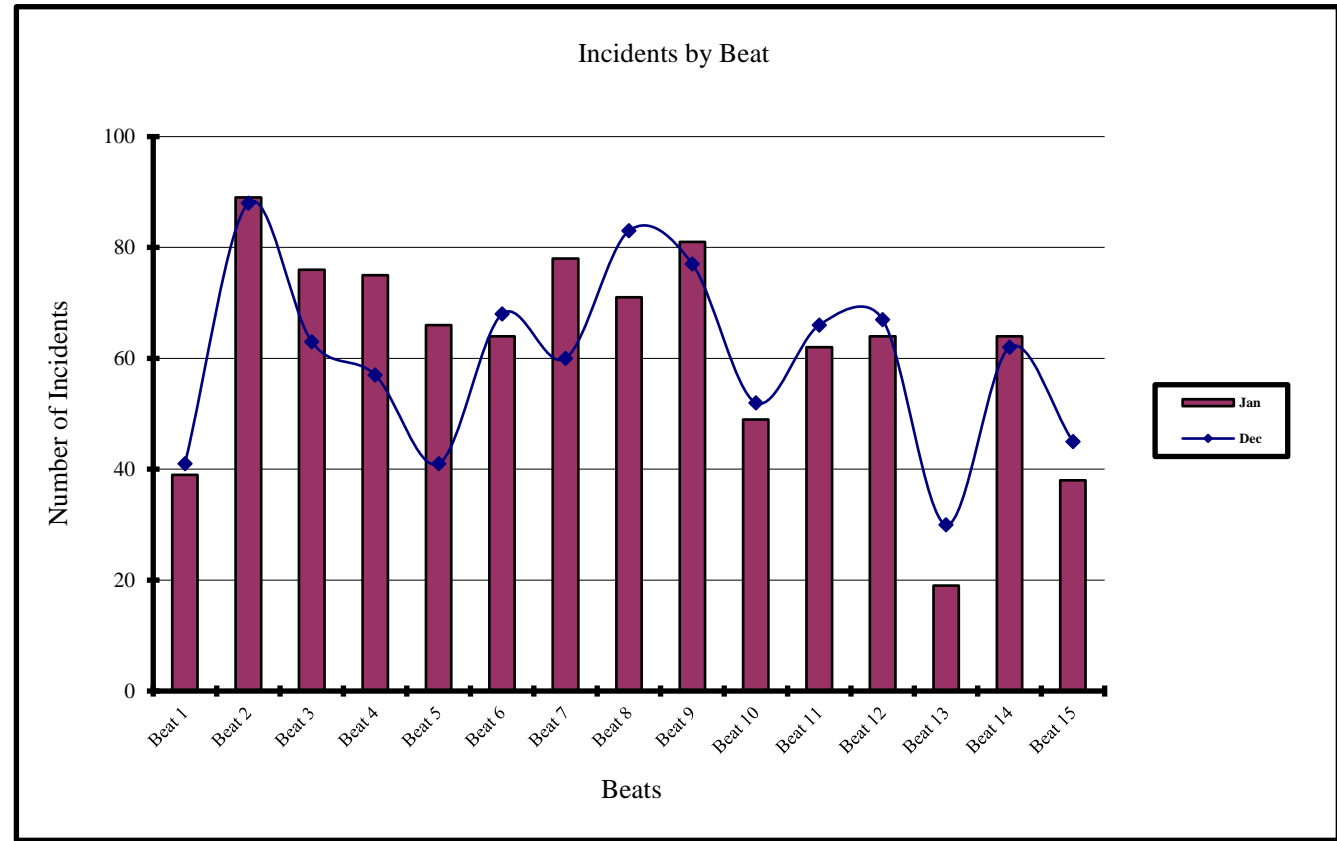
Hour of Day	Jan 2016	Dec 2015
0000 to 0100	31	25
0100 to 0200	26	22
0200 to 0300	20	24
0300 to 0400	28	20
0400 to 0500	14	14
0500 to 0600	10	8
0600 to 0700	16	10
0700 to 0800	28	32
0800 to 0900	46	44
0900 to 1000	36	40
1000 to 1100	50	52
1100 to 1200	40	49
1200 to 1300	63	52
1300 to 1400	59	46
1400 to 1500	57	55
1500 to 1600	67	64
1600 to 1700	55	57
1700 to 1800	55	41
1800 to 1900	45	40
1900 to 2000	41	36
2000 to 2100	46	43
2100 to 2200	42	49
2200 to 2300	32	47
2300 to 2400	28	30



# Current and Previous Months Comparison of Incidents by Beat

## Albany Police Department

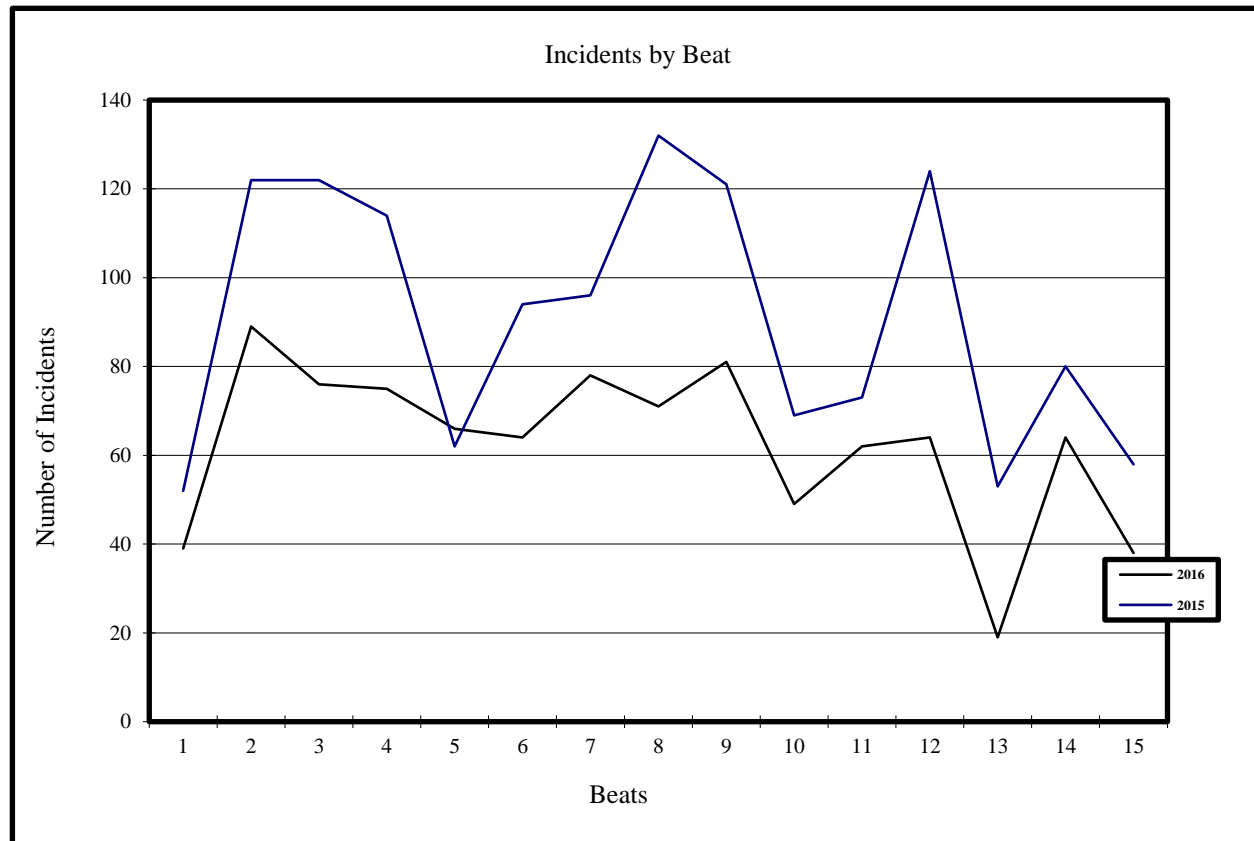
Beat	Incidents	
	Jan 2016	Dec 2015
Beat 1	39	41
Beat 2	89	88
Beat 3	76	63
Beat 4	75	57
Beat 5	66	41
Beat 6	64	68
Beat 7	78	60
Beat 8	71	83
Beat 9	81	77
Beat 10	49	52
Beat 11	62	66
Beat 12	64	67
Beat 13	19	30
Beat 14	64	62
Beat 15	38	45



# Current and Previous Year Comparison of Incidents by Beat

## Albany Police Department

Incidents		
Beat	Jan 2016	Jan 2015
Beat 1	39	52
Beat 2	89	122
Beat 3	76	122
Beat 4	75	114
Beat 5	66	62
Beat 6	64	94
Beat 7	78	96
Beat 8	71	132
Beat 9	81	121
Beat 10	49	69
Beat 11	62	73
Beat 12	64	124
Beat 13	19	53
Beat 14	64	80
Beat 15	38	58



# Current and Previous Month Comparison of Monthly Incidents by Day of Week Albany Police Department

Incidents		
Day	Jan 2016	Dec 2015
Sunday	142	126
Monday	126	125
Tuesday	131	151
Wednesday	117	129
Thursday	116	146
Friday	162	122
Saturday	141	101

